



PROJECT

# LA CITÉ MODÈLE BRUXELLES

Architects:  
B2Ai, A33, Atelier M a+p et Wessel de Jonge

Client:  
Le Foyer Laekenois

La Cité Modèle

LOCATION

LAEKEN - BRUXELLES

COUNTRY

BELGIUM

GENERAL CONTRACTOR

DEMOCO/VANDERSTRAETEN

YEAR

2019

The implemented project includes 4 residential towers (GF + 11 floors, 3 apartments per floor), a low building (ground floor + 4 floors, 27 apartments in total) also accessible to people with reduced mobility and a nursery with 60 places.

The buildings are based in Laeken close to the "Ring of Bruxelles".





# 29

## LA CITÉ MODÈLE LAEKEN - BRUXELLES



<b>LOCATION</b>	Laeken - Bruxelles
<b>COUNTRY</b>	Belgium
<b>GENERAL CONTRACTOR</b>	Democo/Vanderstraeten, Laeken
<b>YEAR</b>	2019

### SCOPE OF WORKS

VENTILATED FACADE  
VENTILATED FACADE  
VENTILATED FACADE

INSULATION

EXTERNAL DECORATION

### AREAS

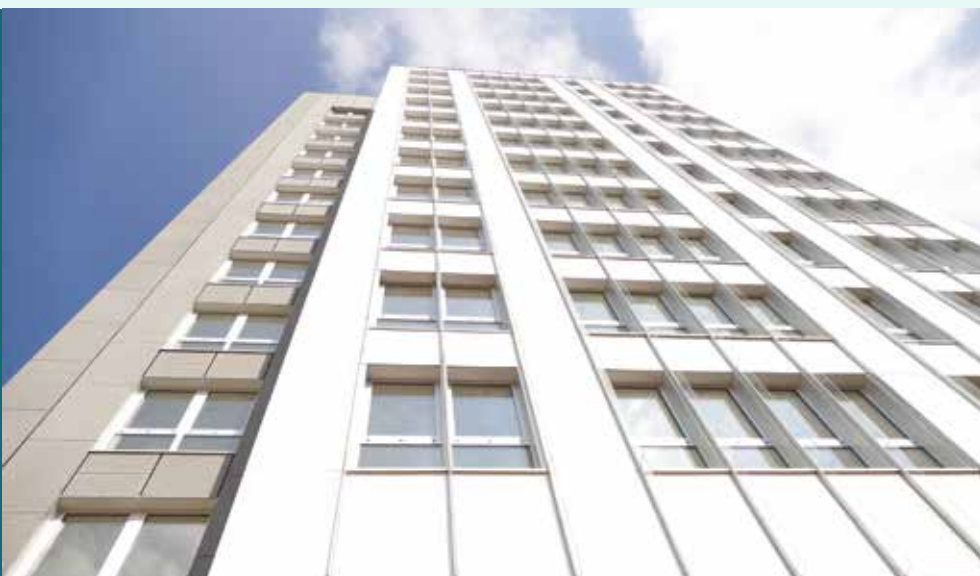
4000 m2  
4000 m2  
850 m2

10000 m2

2500 mt

### MATERIALS

CEMBRIT ROCK FIBER CEMENT TILES  
CEMBRIT SOLID WHITE FIBER CEMENT TILES  
TEMPERED COLOURED GLASS  
KOOLTHERM 15 KINGSPAN; THICKNESS 120MM  
GLASS FIN



PROJECT  
DETAILS



**Alumetal AG**  
P.O. BOX 303  
Via Cereda 3  
CH 6828 Balerna - Switzerland  
P. +41 91 695 40 20 - F. +41 91 695 40 21  
[www.alumetal.ch](http://www.alumetal.ch) - [contract@alumetal.ch](mailto:contract@alumetal.ch)