

ACCESS BANK HEAD OFFICE  
LAGOS - NIGERIA .26



PROJECT

# ACCESS BANK HEAD OFFICE LAGOS

Architects:  
James Cubitt Architects

Access Bank Head Office

LOCATION

LAGOS

COUNTRY

NIGERIA

GENERAL CONTRACTOR

CAPPA AND D'ALBERTO PLC

YEAR

2018

Access Bank new Head Office in Victoria Island - Lagos.

It is a 14 iconic storey structure, with crisscrossing rectangular profiles across the façade with colour being grey tone all through.

Accommodating 1,500 staff, it sits on 2 plots totaling 8,000 m<sup>2</sup> approximately.

With 258 car parking spaces, there are 3 parking floors above grade, 10 office floors and a 14th floor that houses the Canteen and Conferencing.

The entire floor area is 25,432 m<sup>2</sup>.



CAPPA AND D'ALBERTO PLC



# 26

## ACCESS BANK HEAD OFFICE LAGOS / NIGERIA

<b>LOCATION</b>	Lagos
<b>COUNTRY</b>	Nigeria
<b>GENERAL CONTRACTOR</b>	Cappa & D'Alberto PLC-Lagos, Nigeria
<b>YEAR</b>	2018
<b>ARCHITECTS</b>	James Cubitt Architects

### SCOPE OF WORKS

ALUMINIUM GLAZED CURTAIN WALL

ALUMINIUM COMPOSITE PANELS CLADDING  
AUTOMATIC REVOLVING DOOR

INTERNAL PARTITIONS

ENTRANCE CANOPY

### AREAS

6500 m<sup>2</sup>

7200 m<sup>2</sup>

2200 m<sup>2</sup>

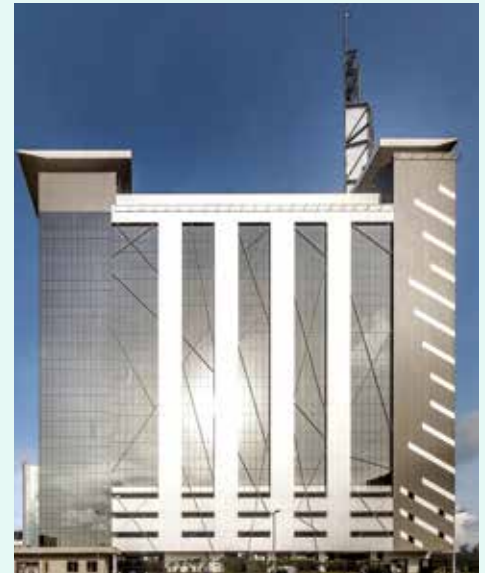
### MATERIALS

GLAZED ALUMINIUM CURTAIN WALL MADE BY WICONA (HYDRO GROUP)  
SOLAR CONTROL LOW-E INSULATING GLASS BY SAINT GOBAIN; 10/15/55.2  
DECORATIVE ALUMINIUM TUBULAR PROFILES FIXED ON CW

4MM. FIRE PROOF ALUMINIUM COMPOSITE PANELS, LARSON BY ALUCOIL  
FULL AUTOMATIC REVOLVING DOOR MADE BY TORMAX - SWITZERLAND

INTERNAL FRAMELESS PARTITIONS GLAZED WITH 10MMMM SAFETY GLASS  
INCLUDING SINGLE AND DOUBLE DOORS

MADE BY GALVANIZED STEEL STRUCTURE AND 21.5 MM THICK SAFETY GLASS



**PROJECT**  
DETAILS

**Alumetal AG**  
P.O. BOX 303  
Via Cereda 3  
CH 6828 Balerna - Switzerland  
P. +41 91 695 40 20 - F. +41 91 695 40 21  
www.alumetal.ch - contract@alumetal.ch

**Cappa and D'Alberto PLC**  
P.O. BOX 870  
72, Campbell Street  
Lagos - Nigeria  
P. +234 1 2645169 - F. +234 1 2633794  
capdal@capdal.com